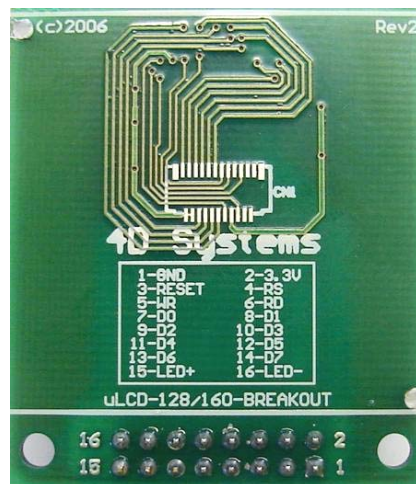




## μLCD-128-BREAKOUT



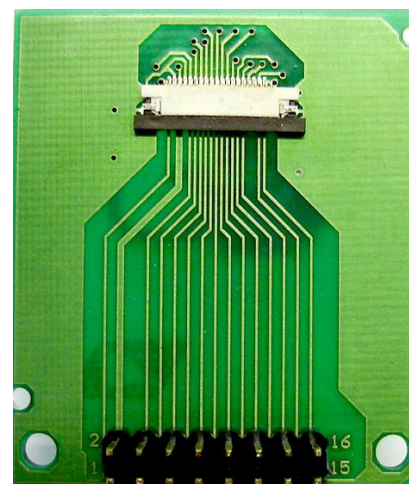
### Product Overview:

The **μLCD-128-BREAKOUT** is a compact and cost effective carrier board for the 1.5" 128x128 colour LCD display (purchased separately). This LCD is the same display used in the microLCD range of modules. All of the pins are available via a 16 pin header. The carrier board allows for quick and easy prototyping and can be interfaced to any 8/16/32 bit host micro. Schematics and sample initialisation code are also available upon purchase.

### Main Features:

- Carrier Board for the **LCD-128** display
- 19 pins surface mount LCD header on board
- 16 pins dual header allowing all LCD signals to be accessed
- Dimensions: 39mm x 46mm
- 2.2 to 3.6 Volts supply @ 1mA nominal
- 5 Volts or greater for the White LED backlighting @ 10mA to 70mA

Pin	Name	Description
1	GND	Ground
2	3.3V	Supply Voltage 2.2 Volts to 3.6 Volts, nominal 3.3 Volts
3	RESET	Reset Signal, Initialises the LCD when Low (Active Low)
4	RS	Register/Control Select. Low = Register Index, Hi = Data
5	WR	Write Signal Strobe (Active low)
6	RD	Read Signal Strobe (Active Low)
7-14	D0-D7	LCD DATA Bus, connects to host micro 8 bit data bus or port
15	LED+	Backlight LED positive supply 10mA to 70mA
16	LED-	Backlight LED negative supply, nominally connects to GND



Front without the LCD



Sample screen shots

### Related Products:

- LCD-128** (1.5" 128x128 RGB 65K colour LCD Display)
- LCD-160** (1.8" 128x160 RGB 65K colour LCD Display)
- uLCD-160-BREAKOUT** (Carrier Board for the 128x160 LCD display)

### For Help and Other Information:

- Assistance with latest information and downloads visit the **μLCD** product web-page of your distributor.
- Questions and technical support please email [support@4dsystems.com.au](mailto:support@4dsystems.com.au)