

# **ezVSP User's Manual**

( Version 2.2c )

# Contents

<b>Chapter 1 Overview .....</b>	<b>1</b>
1.1 Introduction .....	1
2.2 Key Features .....	2
<b>Chapter 2 Installation .....</b>	<b>3</b>
2.1 Ready to install ezVSP .....	3
2.2 Install ezVSP application .....	5
<b>Chapter 3 Settings .....</b>	<b>7</b>
3.1 Virtual Serial Port Control Center .....	7
3.1.1 Create Virtual Serial Port .....	7
3.1.2 Start Virtual Serial Port .....	10
3.1.3 Status of Virtual Serial Port .....	10
3.1.4 Statistics of data .....	13
3.1.5 Stop Virtual Serial Port .....	13
3.1.6 Configure Virtual Serial Port .....	14
3.1.7 Delete Virtual Serial Port .....	15
3.1.8 Reset Virtual Serial Bus .....	16
3.1.9 Pop up menu .....	17
3.2 About .....	18
<b>Chapter 4 Messages .....</b>	<b>19</b>
4.1 Note .....	19
4.1.1 Using Virtual Serial Port .....	19
4.1.2 Start network connection .....	19
4.1.3 TCP Server .....	19

4.2 Error Messages .....	20
<b>Chapter 5 Example .....</b>	<b>22</b>
5.1 Application with ezTCP/LAN .....	22
<b>Chapter 6 License .....</b>	<b>25</b>
6.1 License for use and distribution .....	25

# Chapter 1

## Overview

---

### 1.1 Introduction

- ezVSP, which is a program playing the same role as ezTCP/LAN in PC, provides data communication between serial port and Ethernet (TCP/IP). With the help of ezVSP you can exchange data between Ethernet and your serial port without modifying standard communication programs on your PC.
- With ezVSP you can create as many virtual serial ports as needed.
- The ezVSP program is provided for user who uses ezTCP/LAN and you should enter the key value when you run the ezVSP program for the first time. You can get a key from Sollae Systems homepage at [http://www.eztcp.com/en/Support/req\\_reg.php](http://www.eztcp.com/en/Support/req_reg.php).
- In order to get a key, you have to register your ezTCP/LAN product. If you have many ezTCP/LAN, it is enough to register only one.
- ezVSP is designed for Windows 2000/XP.
- ezVSP program is subject to change without prior notice. You can always check for the last ezVSP version at <http://www.eztcp.com/en/Support/support.php>.

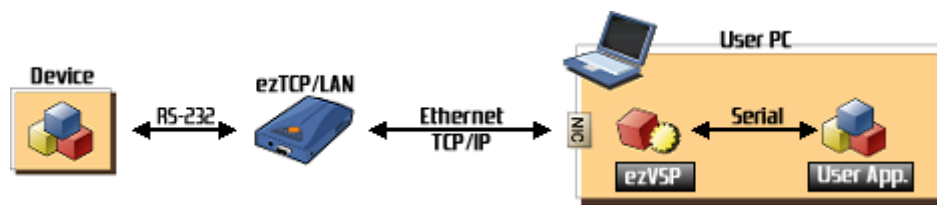


Figure 1.1 System Overview

## 1.2 Key Features

- Function
  - ezVSP is started automatically at Windows 2000/XP startup.
  - ezVSP supports TCP server, TCP client and UDP.
  - ezVSP supports SSL v3.0 and TLS v1.0 (in case of TCP Server and TCP Client).
  - ezVSP can create several virtual serial ports.
- H/W and S/W Requirement
  - Windows 2000/XP
  - At least 20Mbytes of disk space

# Chapter 2

## Installation

### 2.1 Ready to install ezVSP

- Welcome

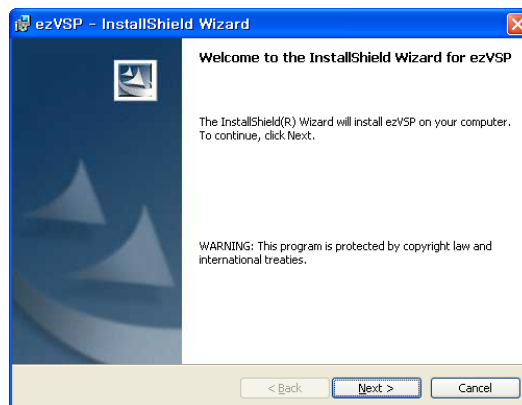


Figure 2.1.1 InstallShield Wizard. Welcome Screen

- License Agreement

- To install ezVSP you must accept the terms of the license agreement.



Figure 2.1.2 InstallShield Wizard. License Agreement

- Customer Information

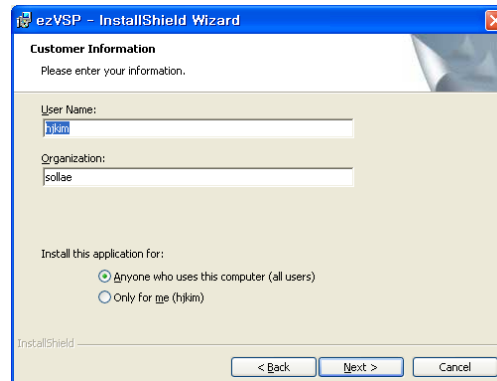


Figure 2.1.3 InstallShield Wizard. Customer Information

- Setup Type

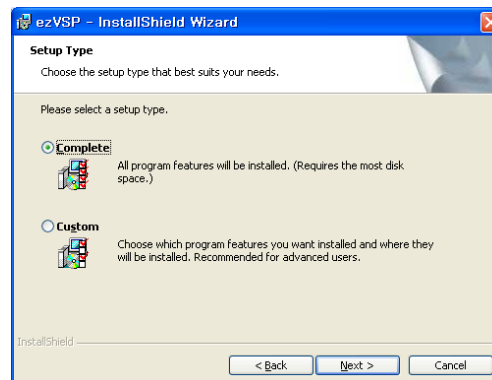


Figure 2.1.4 InstallShield Wizard. Setup Type

- Ready to install
  - Click Install to begin ezVSP installation.

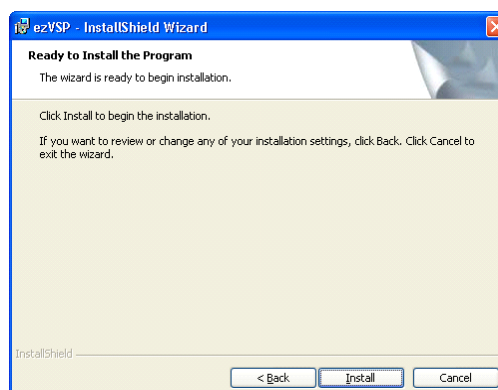


Figure 2.1.5 InstallShield Wizard. Ready to install

## 2.2 Install ezVSP application

- Installing ezVSP
  - Setup installs ezVSP.

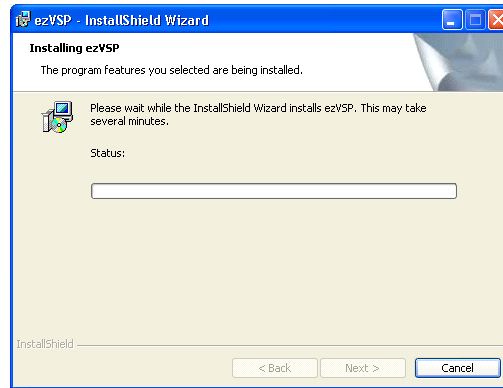


Figure 2.2.1 Installing ezVSP

- Installation completed
  - ezVSP Setup creates "C:\Program Files\SollaeSystems\ezVSP" folder and Go to ezVSP shortcut in Windows Start menu.

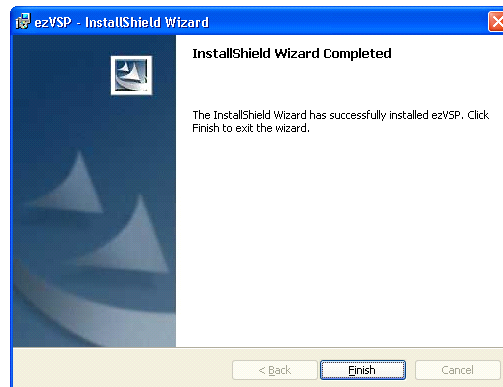


Figure 2.2.2 InstallShield Wizard. Installation Complete

- Registration
  - When you start ezVSP for the first time, you must supply the registration key.
  - You can get the key from Sollae Systems homepage. To get a key you must register a MAC address of any of your ezTCP/LAN products.
  - You can use the same MAC address and key value for ezVSP running on several PCs.



- Click Link in the registration window or visit our homepage support page [http://www.eztcp.com/en/Support/req\\_reg.php](http://www.eztcp.com/en/Support/req_reg.php)

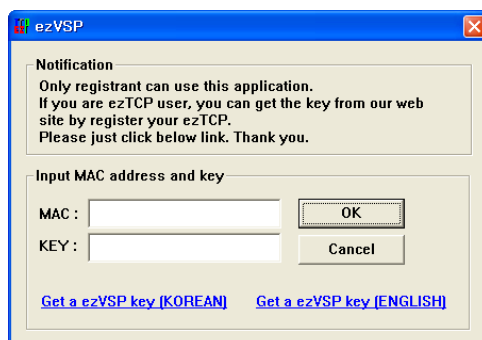


Figure 2.2.3. Registration

# Chapter 3

## Settings

### 3.1 Virtual Serial Port Control Center

#### ▪ The Application

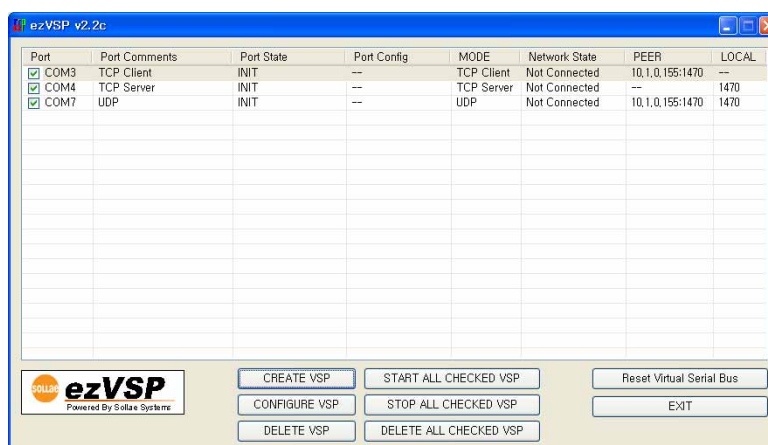



Figure 3.1.1. Main Window

#### 3.1.1 CREATE Virtual Serial Port.

- Create environment variables to run virtual serial ports.
- Set up window
  - When you click , the following dialog box appears:

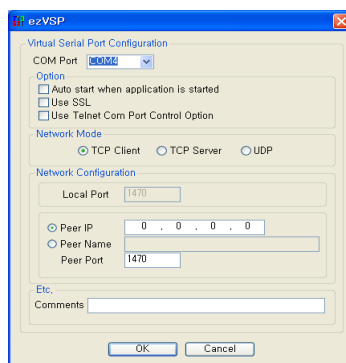
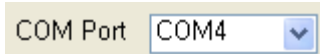


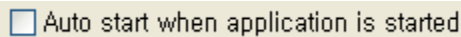
Figure 3.1.2. Set up Window

### ▪ COM Port

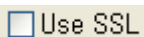
A screenshot of a software interface showing a dropdown menu for 'COM Port'. The menu is open, and 'COM4' is selected and displayed in the dropdown box.

- Choose a COM port to be used as virtual serial port.

### ▪ Option

A screenshot of a software interface showing a checkbox labeled 'Auto start when application is started'. The checkbox is currently unchecked.

- When you select this option, virtual serial port is automatically created and enabled when ezVSP starts.

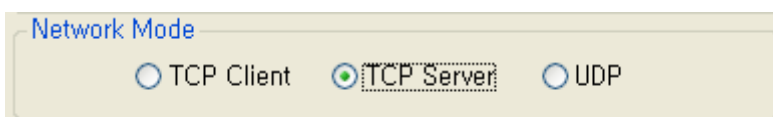
A screenshot of a software interface showing a checkbox labeled 'Use SSL'. The checkbox is currently unchecked.

- When you select this option, SSL (Secure Server Layer) will be used for the specified virtual serial port for data communication over Ethernet (TCP/IP).
- SSL v3.0 and TLS v1.0 are supported.

A screenshot of a software interface showing a checkbox labeled 'Use Telnet Com Port Control Option'. The checkbox is currently unchecked.

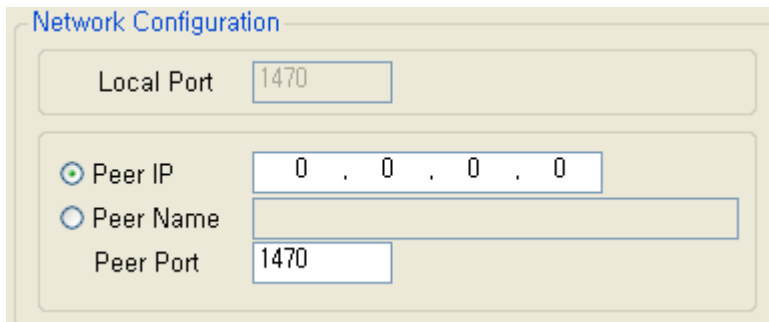
- When you select this option, "Telnet Com Port Control Option" protocol will be used for the specified virtual serial port.
- You can send RS-232 control signals over Ethernet.
- Please refer to "RFC-2217" for more detail information.

### ▪ Network Mode

A screenshot of a software interface titled 'Network Mode'. It contains three radio button options: 'TCP Client', 'TCP Server', and 'UDP'. The 'TCP Server' option is selected, indicated by a filled green circle.

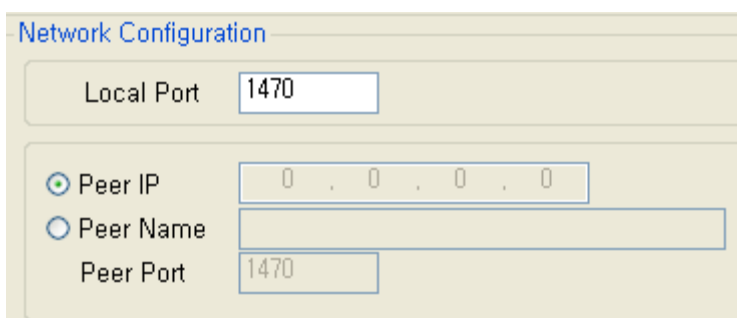
- Select Ethernet data communication mode. Available options include TCP Client, TCP Server, and UDP.
- SSL (Secure Server Layer) is available only in TCP mode.
- "Telnet Com Port Control Option" is available only in TCP mode.
- TCP Server mode does not support multiple connections.

## ▪ Network Configuration



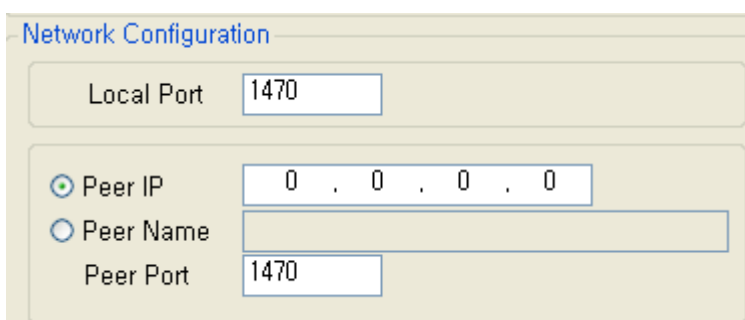
The dialog box is titled "Network Configuration". It contains three input fields: "Local Port" with the value "1470", "Peer IP" with the value "0 . 0 . 0 . 0", and "Peer Port" with the value "1470". The "Peer IP" field is selected with a radio button.

- In case Network Mode is set to TCP Client, supply IP address (Peer IP) and the port number (Peer Port) of the server to be connected to ezVSP.
- Choose "Peer IP" for use IP address.
- Choose "Peer Name" for use Domain Name.



The dialog box is titled "Network Configuration". It contains three input fields: "Local Port" with the value "1470", "Peer IP" with the value "0 . 0 . 0 . 0", and "Peer Port" with the value "1470". The "Peer IP" field is selected with a radio button.

- In case Network Mode is set to TCP Server, supply the port number (Local Port) for ezVSP to listen.



The dialog box is titled "Network Configuration". It contains three input fields: "Local Port" with the value "1470", "Peer IP" with the value "0 . 0 . 0 . 0", and "Peer Port" with the value "1470". The "Peer IP" field is selected with a radio button.

- In case Network Mode is set to UDP, supply the IP address (Peer IP) and port number (Peer Port) of the host to which ezVSP transmits UDP packets and the port number (Local Port) for ezVSP to bind.

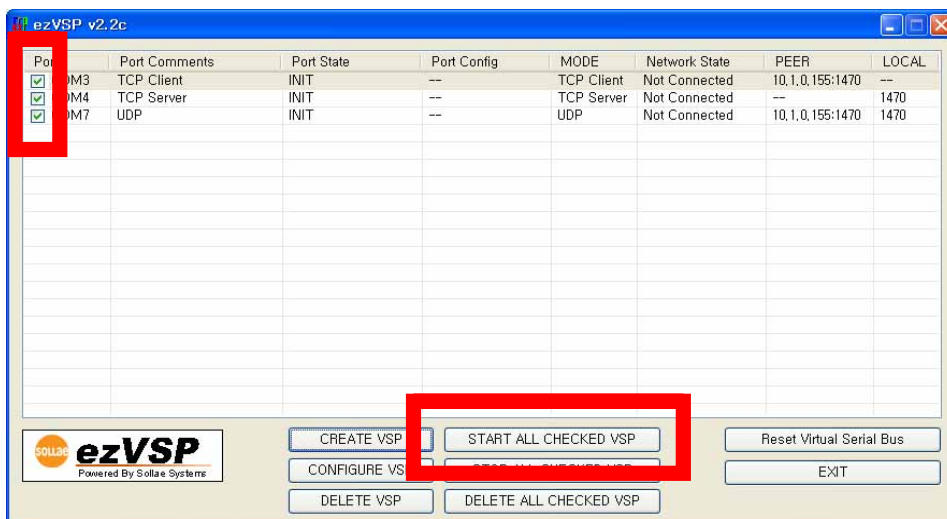
- Choose "Peer IP" for use IP address.
- Choose "Peer Name" for use Domain Name.
- Etc.

Etc.  
Comments

- You can provide an optional comment for each virtual serial port.

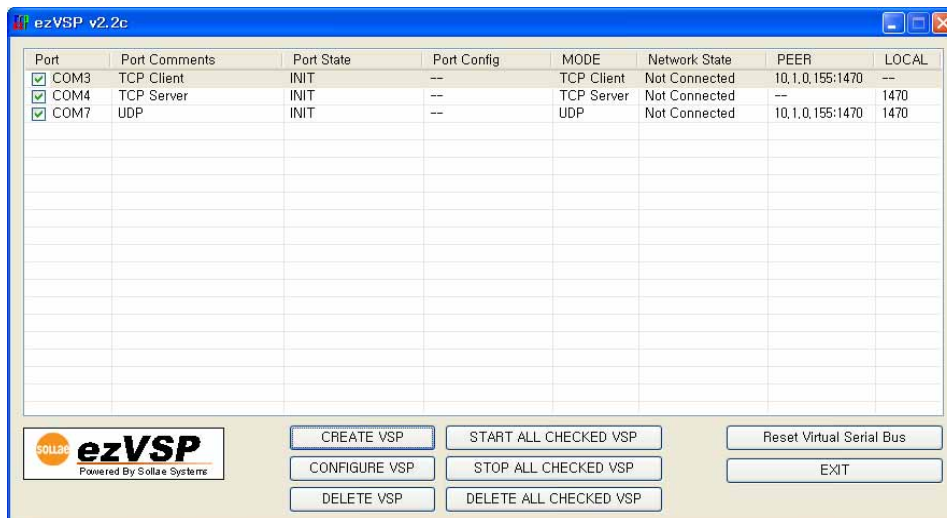
### 3.1.2 START Virtual Serial Port.

- Start virtual serial ports with environment variables you have created (See 3.1.1. CREATE Virtual Serial Port).



- To start a port, select the check box next to it in the Main Window and click  to start all selected ports.

### 3.1.3 Status of Virtual Serial Port



- You can check the status of each virtual serial port in the Main Window.
- The meaning of each item is explained below:

## Port

- The name of the COM port of virtual serial port.

### Port Comments

- Optional comment for this port.

## Port State

- The state of virtual serial port.

INIT	Initialized status before starting virtual serial port
CREATED	Virtual serial port is started
OPEN	Virtual serial port is started and being used by a serial communication program
CLOSE	Virtual serial port was started, but a serial communication program has stopped using it.
CREATE ERROR	An error was detected when starting virtual serial port.
ERROR	Virtual serial port was started and an error was detected when used by a serial communication program.

#### Port Config

- Port settings of serial communication program which uses this virtual serial port.
- In OPEN state, a virtual serial port configured as 19200bps, No parity, 8bits data, 1 stop bit is displayed as follows:

Port	Port Comments	Port State	Port Config	MODE	Network State	PEER	LOCAL
<input checked="" type="checkbox"/> COM4	TCP Server	OPEN	19200-8-None-1	TCP Ser...	Listen	-	1470

#### MODE

- Network Mode used for this virtual serial port.

#### Network State

- TCP/IP network state.

Not Connected	TCP/IP network is not connected.
Connected	TCP/IP network is connected.
Error	An error was detected during TCP/IP connection or data communication.
Connecting	TCP/IP network is being connected. (Only TCP Client mode).
SSL Connecting	TCP/IP network is being connected using SSL. (Only TCP Client mode with enabled SSL)
Listen	Waiting for TCP/IP connection. (Only TCP Server mode)
Bind	Normal bind state (Only UDP mode).

**PEER**

- IP address and port number of the connected server (TCP Client mode).

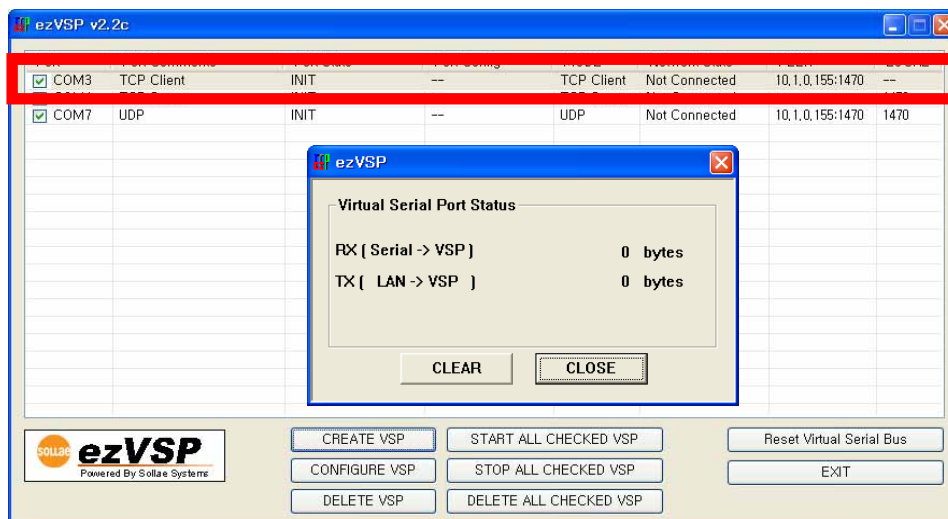
**LOCAL**

- Local port number for Listen or Bind (TCP Server or UDP mode).



### 3.1.4 Data Statistic

- You can check the statistics of data exchanged through virtual serial port.

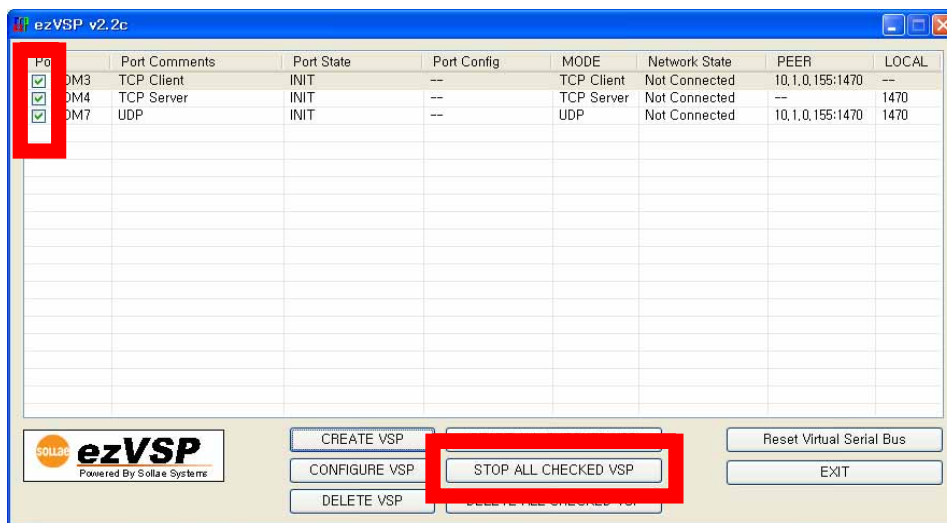


- Double-click the virtual serial port for which you want to check statistics. The dialog box shown in the figure above is displayed.

RX ( Serial -> VSP )	The amount of data sent from RS-232 communication program to ezVSP through the selected virtual serial port.
TX ( LAN -> VSP )	The amount of data sent from TCP/IP communication program or equipment to ezVSP through the selected virtual serial port.

### 3.1.5 Stop Virtual Serial Port

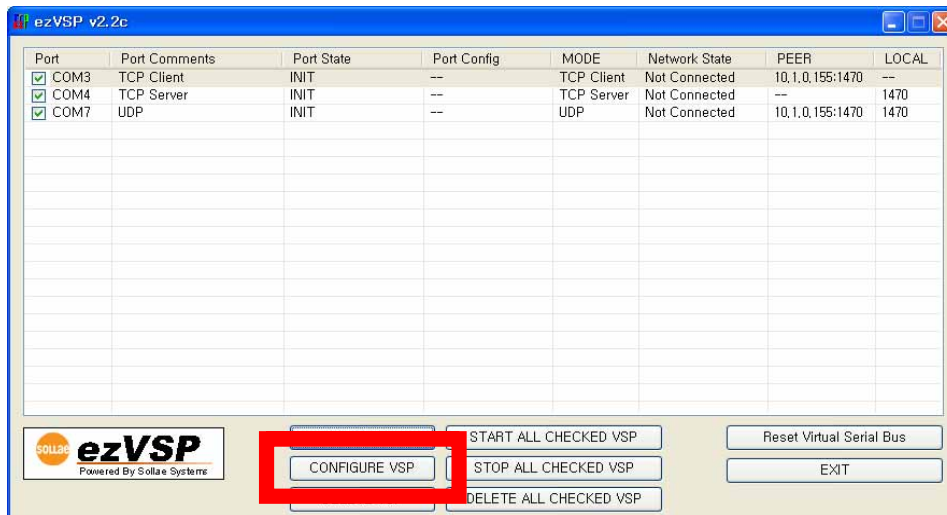
- This function is used to stop an opened virtual serial port.
- You cannot change settings of an opened virtual serial port.
- If you want to change settings of a virtual serial port, you should stop it first.
- If an RS-232 communication program is using the selected virtual serial port, you should close the virtual serial port before stopping.



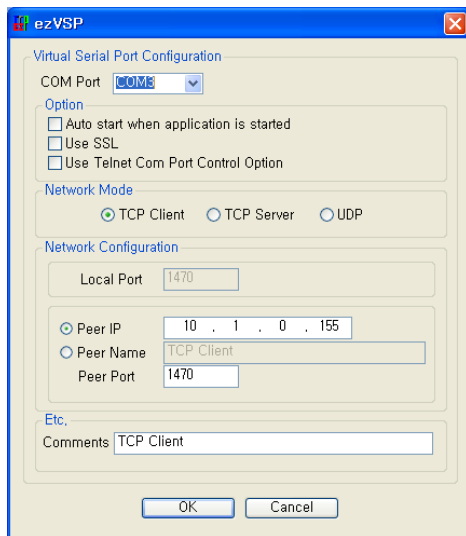
- Select the check box next to virtual serial ports you want to stop in the Main Window and click **STOP ALL CHECKED VSP** to stop all the selected ports.

### 3.1.6 Configure Virtual Serial Port

- This function is used to change settings for a virtual serial port.
- You cannot change settings for an opened virtual serial port .



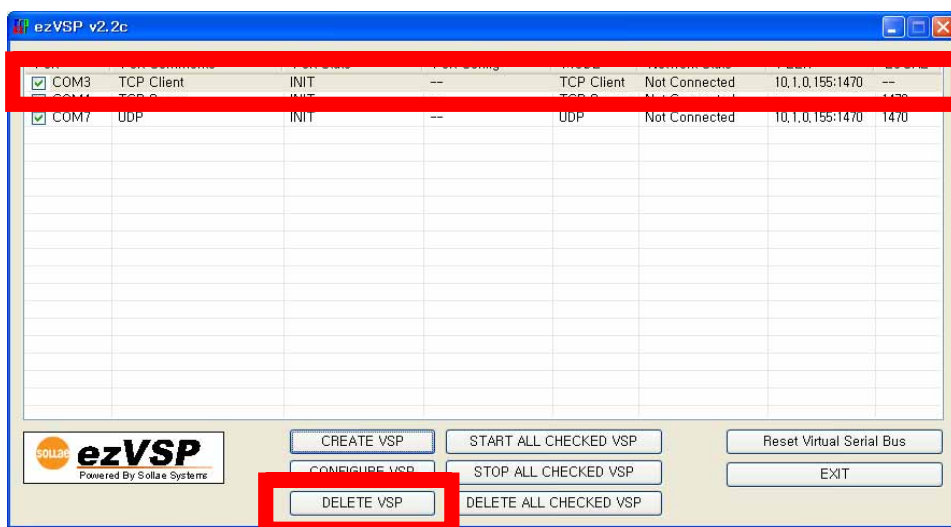
- Select a virtual serial port for which you want to change settings in the main window and click **CONFIGURE VSP**. The following dialog box is displayed:




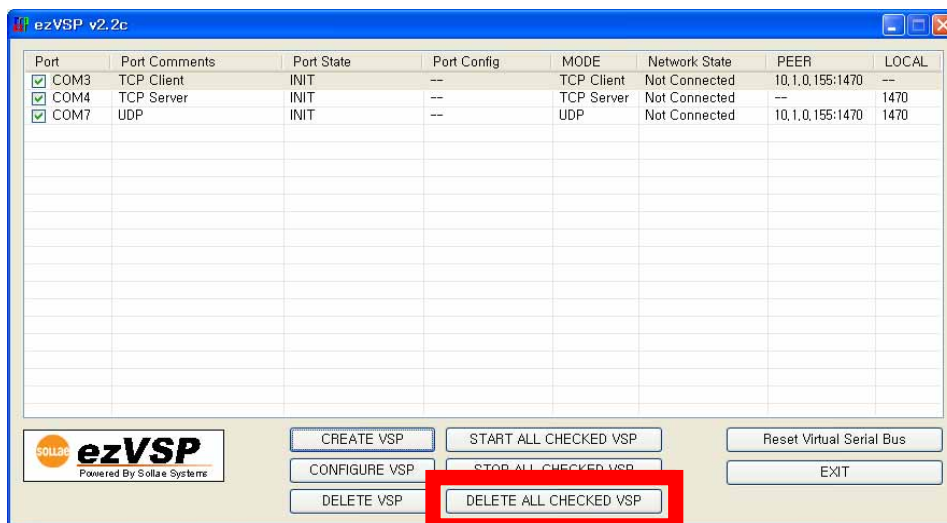
- For explanation of items see 3.1.1. CREATE Virtual Serial Port.


### 3.1.7 Delete Virtual Serial Port

- This function is used to delete a virtual serial port.
- You cannot delete an opened virtual serial port.



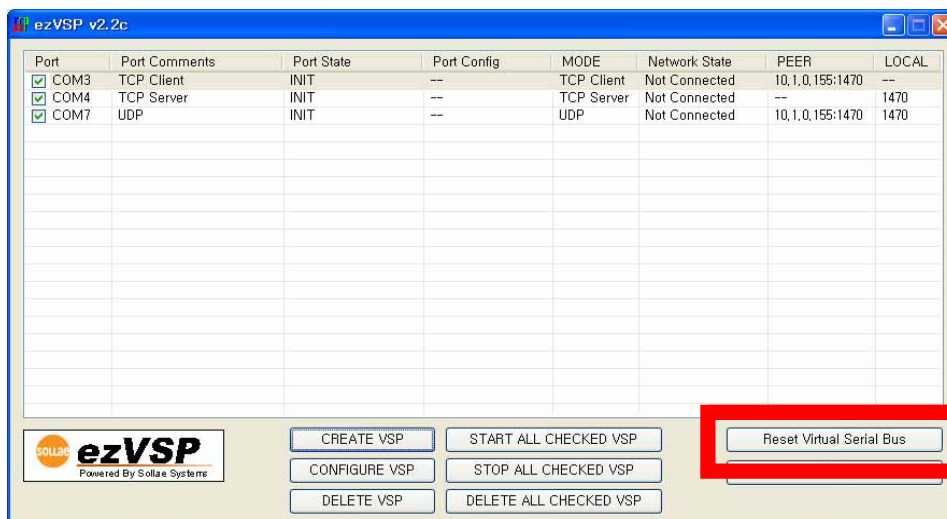
- Select a virtual serial port you want to delete in the Main Window and click  to delete the selected port.



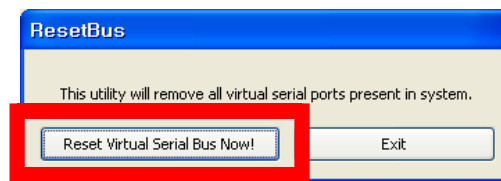
- Select check boxes next to virtual serial ports you want to delete in the Main Window and click  to delete all the selected ports.

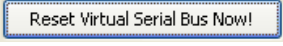
### 3.1.8 Reset Virtual Serial Bus

- The CREATE ERROR occurred when start virtual serial ports then the Reset Virtual Serial Bus program can solve that problem.



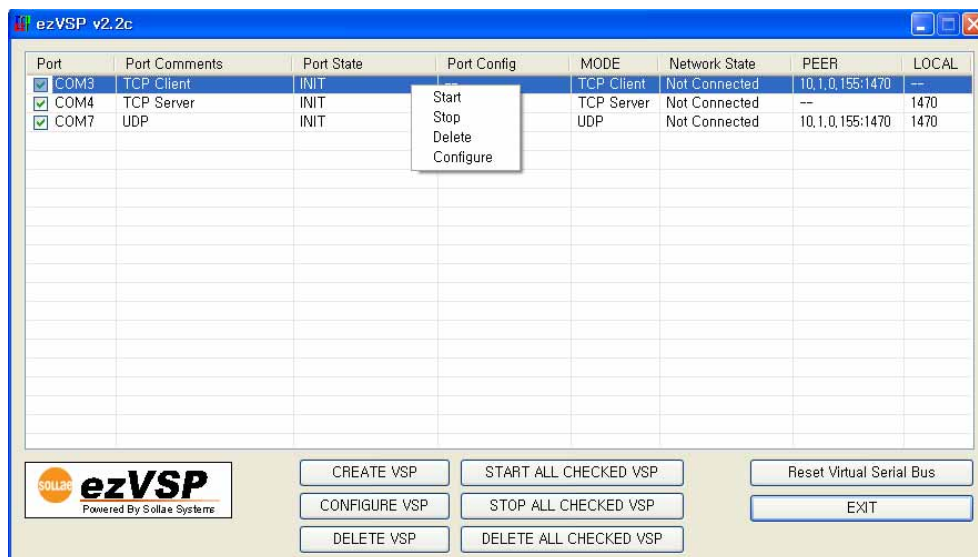
- Click  then The following program is displayed:



- Click  then it will remove all virtual serial ports present in system.

### 3.1.8 Pop up menu

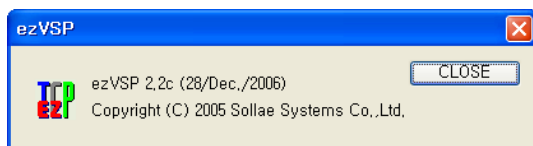
- Right-click a virtual serial port you want in the Main Window to display popup menu.
- With popup menu commands you can control the selected virtual serial port.



- Popup menu commands are described above.

## 3.2 About

- About



- You can check the current ezVSP version.
- ezVSP program is subject to change without prior notice due to reasons of function update, bug revision, etc.
- You can download the latest ezVSP version from <http://www.eztcp.com/en/Support/support.php>

# Chapter 4

## Messages

---

### 4.1 Note

#### 4.1.1 Using Virtual Serial Port

- To use virtual serial port, you have to create and start a specific COM port first (See 3.1.1 and 3.1.2. ).

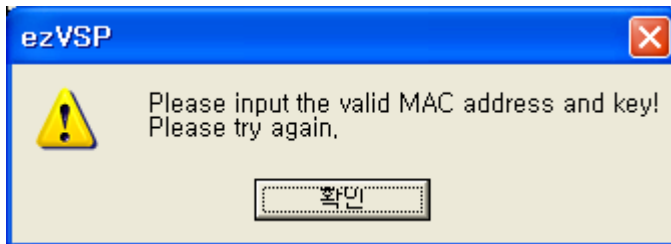
#### 4.1.2 Start network connection

- If network mode is set to TCP Server or UDP, Listen or Bind beings after virtual serial port has started.
- If network mode is set to TCP Client, TCP/IP connection with the peer host is established after virtual serial port has started.

#### 4.1.3 TCP Server

- TCP server provided by ezVSP does not support multiple connections.

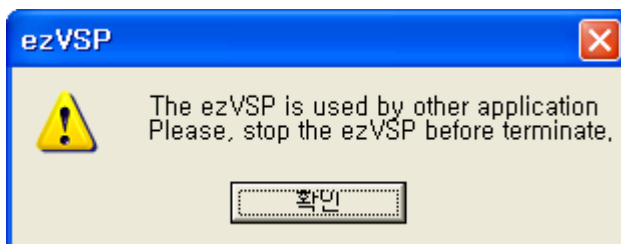
## 4.2 Error Messages



- When you install and run ezVSP for the first time, you should supply MAC address and a key for your ezTCP/LAN (See 2.2).
- If you supply an invalid MAC address, the above message is displayed.
- Supply a correct MAC address for your ezTCP/LAN.



- When you install and run ezVSP for the first time, you should supply MAC address and a key for your ezTCP/LAN (See 2.2).
- If you supply an invalid key, the above message is displayed.
- Supply a correct key value for your ezTCP/LAN.

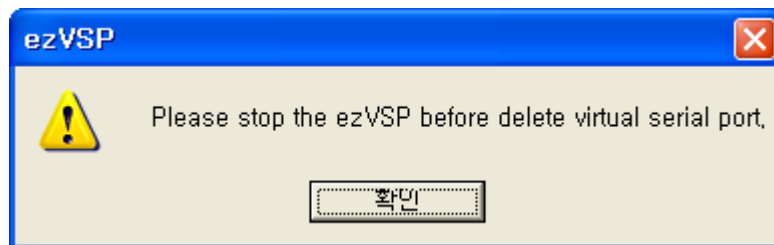


- The above message is displayed when you try to terminate ezVSP while there is an active virtual serial port registered in the Main Window.
- You should stop all registered virtual serial ports in the Main Window before you quit ezVSP.

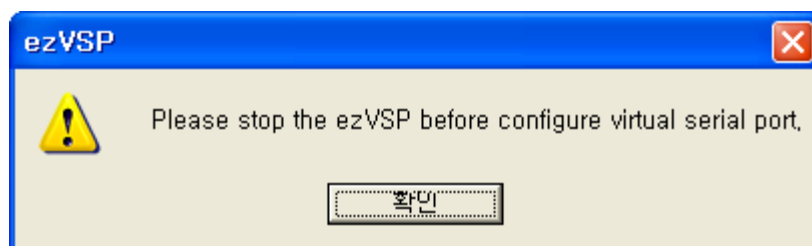




- This message is displayed when you try to stop virtual serial port being used by RS-232 communication program.
- You should stop using the port by RS-232 communication program before you stop virtual serial port.



- This message is displayed when you try to delete an active virtual serial port.
- You should stop the virtual serial port before you delete it.



- This message is displayed when you try to configure an active virtual serial port.
- You should stop the virtual serial port before configuring.

# Chapter 5

## Example

### 5.1 Application with ezTCP/LAN

#### ■ Abstract

- Install ezTCP/LAN between a PC and serial device through LAN for data communication as shown in the figure below.

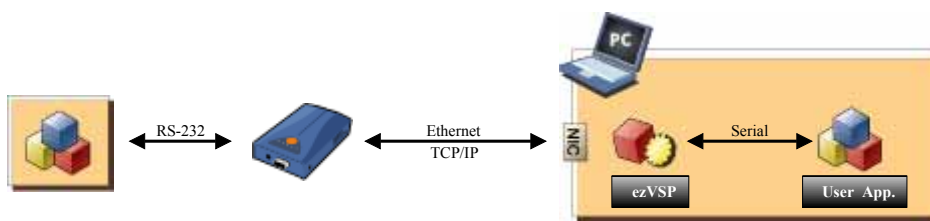


Figure 5.1.1 Application Abstract

#### ■ Configure PC IP address

- Default ezTCP settings are as follows:

Local IP Address	10.1.0.1
Subnet Mask	255.0.0.0
Gateway IP Address	0.0.0.0
Local Port	1470

- Change the IP address of your PC to match the subnet of your ezTCP/LAN.
- If you want to use the IP address of your PC, change the network configuration of your ezTCP/LAN to match the PC subnet.

## ■ ezTCP/LAN Settings

ezConfig v3.0d (8/Apr/2005)

MAC Address: 00 30 f9 00 00 01

Search List:

- 00:30:f9:00:00:01
- 00:30:f9:00:00:04
- 00:30:f9:00:00:05

Local IP Address: 10 . 1 . 0 . 1

Subnet Mask: 255 . 0 . 0 . 0

Gateway IP Address: 0 . 0 . 0 . 0

Peer IP Address: 0 . 0 . 0 . 0

Reserved: . . . . .

ezTCP Mode: T25(0)

Local Port: 1479

Timeout: 0

Conn. Byte: 0

Peer Port: 0

Password: . . . . .

Serial Type: RS-232

Baudrate: 19200

Parity: NONE

Data Bits: 8

Stop Bit: 1 bit

Flow Control: NONE

WLAN Mode: AD-HOC(0)

Target SSID: . . . . .

Ad-hoc Master SSID: . . . . .

Channel: 0

WEP: No WEP(0)

WEP Key: . . . . .

Options:

- ☐ DHCP
- ☐ PPPoE
- ☒ ezCFG
- ☐ WLAN CFG
- ☐ Power Down
- ☒ ARP
- ☐ Multi Conn.
- ☒ Telnet
- ☐ EAP OL
- ☐ Secure

Start Option

Comment: . . . . .

Buttons: Search ezTCP, Write, PPPoE ID, Change PWD, Status, Exit

- Check that your network is configured for the same subnet as your PC.
- Set local TCP listening port number for ezTCP/LAN.

## ■ ezVSP Settings

ezVSP v2.2c

Port: COM3, TCP Client

Port: COM4, TCP Server

Port: COM7, UDP

Virtual Serial Port Configuration

COM Port: COM3

Option:

- ☐ Auto start when application is started
- ☐ Use SSL
- ☐ Use Telnet Com Port Control Option

Network Mode:

- ☒ TCP Client
- ☐ TCP Server
- ☐ UDP

Network Configuration

Local Port: 1470

Peer IP: 10 . 1 . 0 . 11

Peer Name: TCP Client

Peer Port: 1470

Etc.

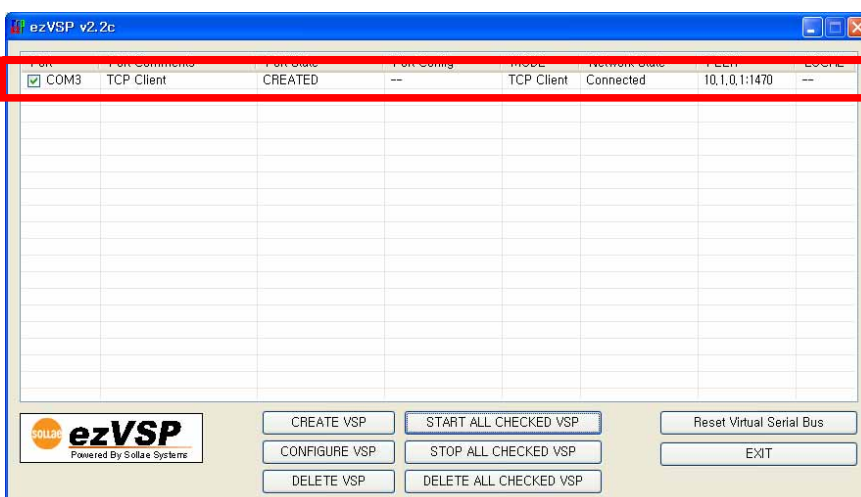
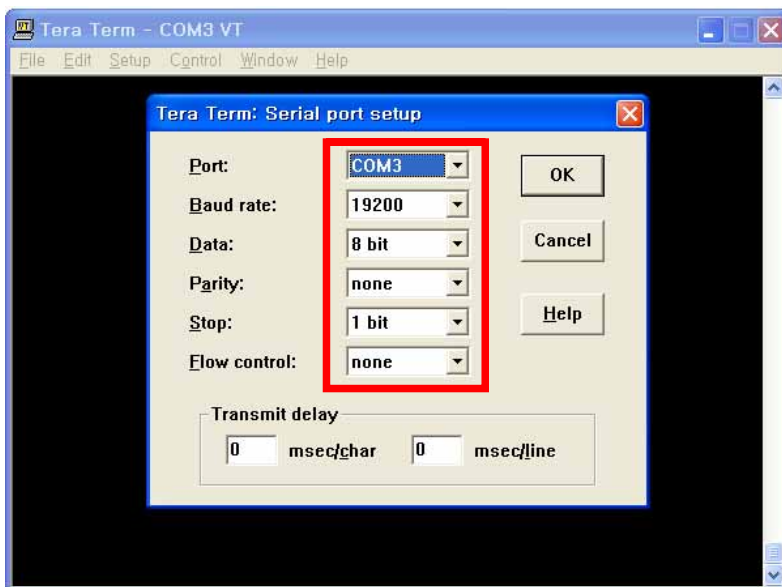
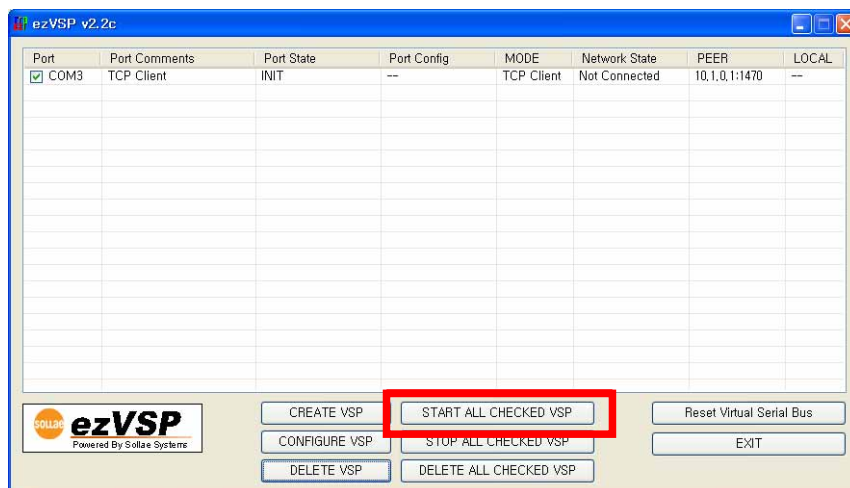
Comments: TCP Client

Buttons: OK, Cancel

Reset Virtual Serial Bus

EXIT

- Supply local IP address and local port number configured for ezTCP to create virtual serial port.
- Start the created virtual serial port than TCP/IP connection is established.
- Use an RS-232 communication program to open it for a test.



- When TCP/IP connection is completed, you can start data communication through your virtual serial port.

# Chapter 6

## License

---

### 6.1 License for use and distribution

▪ **This software is shareware. This means:**

- All copyrights to THIS SOFTWARE are exclusively owned by the Sollae Systems.
- Only certified user can use this software. The period of use is not restricted.
- Once registered, the user is granted a non-exclusive license to use software on one computer, for any legal purpose, at a time. The registered software may not be rented or leased, but may be permanently transferred, if the person receiving it agrees to terms of this license. If the software is an update, the transfer must include the update and all previous versions.
- THIS SOFTWARE IS DISTRIBUTED "AS IS". NO WARRANTY OF ANY KIND IS EXPRESSED OR IMPLIED. YOU USE AT YOUR OWN RISK. THE AUTHOR WILL NOT BE LIABLE FOR DATA LOSS, DAMAGES, LOSS OF PROFITS OR ANY OTHER KIND OF LOSS WHILE USING OR MISUSING THIS SOFTWARE.
- You may not use, copy, emulate, clone, rent, lease, sell, modify, decompile, disassemble, otherwise reverse engineer, or transfer the licensed program, or any subset of the licensed program, except as provided for in this agreement. Any such unauthorized use shall result in immediate and automatic termination of this license and may result in criminal and/or civil prosecution. All rights not expressly granted here are reserved by Sollae Systems.
- Installing and using THIS SOFTWARE signifies acceptance of these terms and conditions of the license.
- If you do not agree with the terms of this license you must remove files of THIS SOFTWARE from your storage devices and cease to use the product.